

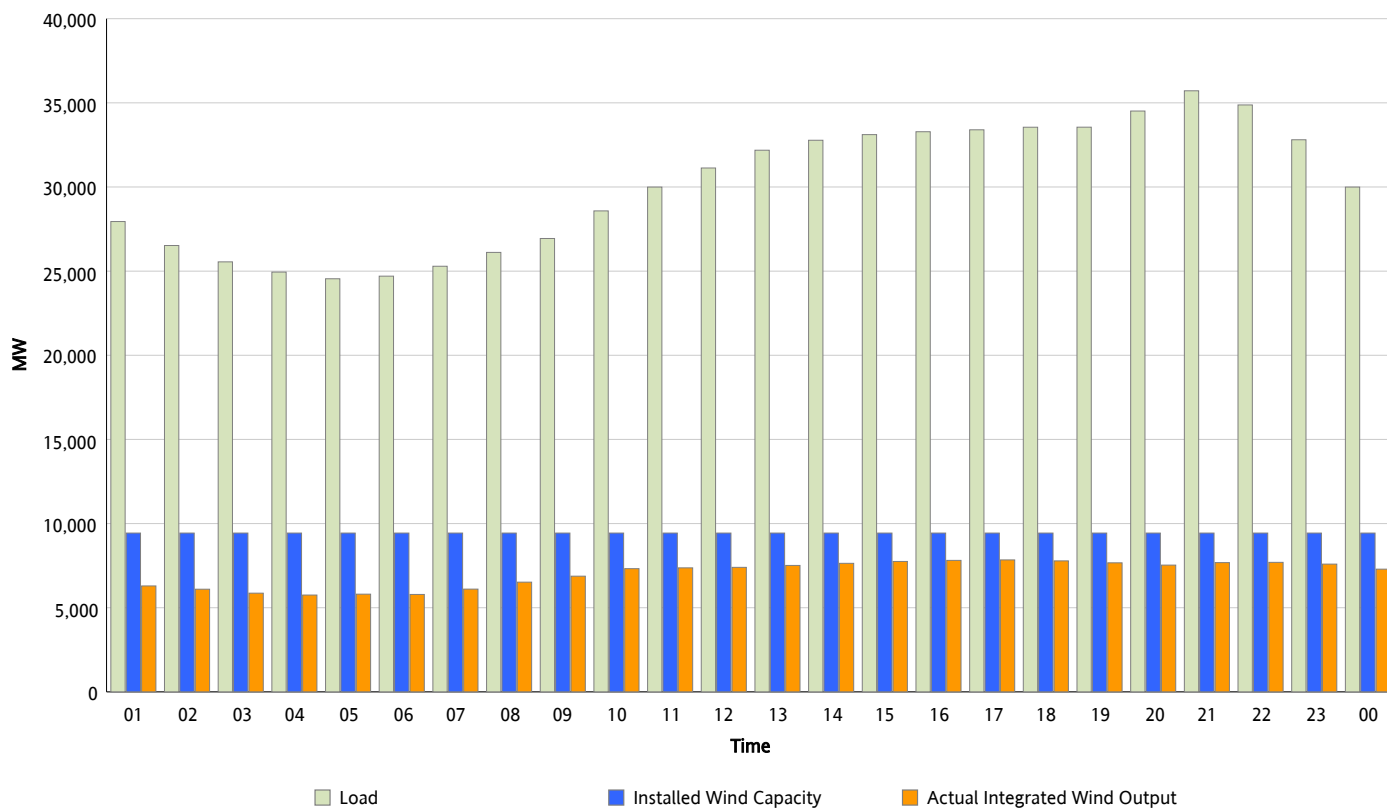


ERCOT Grid Operations

Wind Integration Report : 03/18/2012

Peak Load	35,716 MW
Load Peak Hour (HE)	21
Wind Over Peak	7,680 MW
Wind Record 03/18/12	7,917 MW
Max Wind Value*	7,917 MW
Wind Peak Time	16:13
Wind Integration %	23.73 %

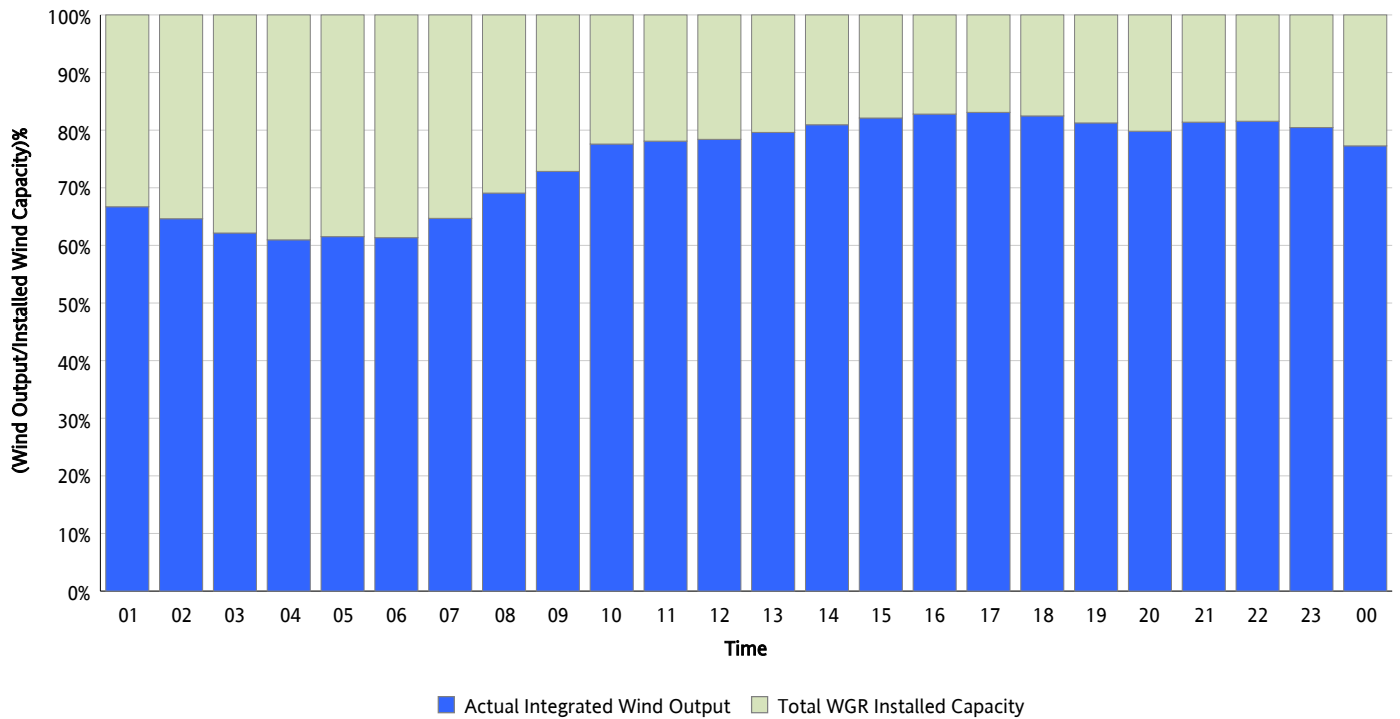
Hourly Average Actual Load vs. Actual Wind Output
03/18/2012



** Wind Record and Wind Max represent instantaneous values and the rest of the values are integrated over the hour*

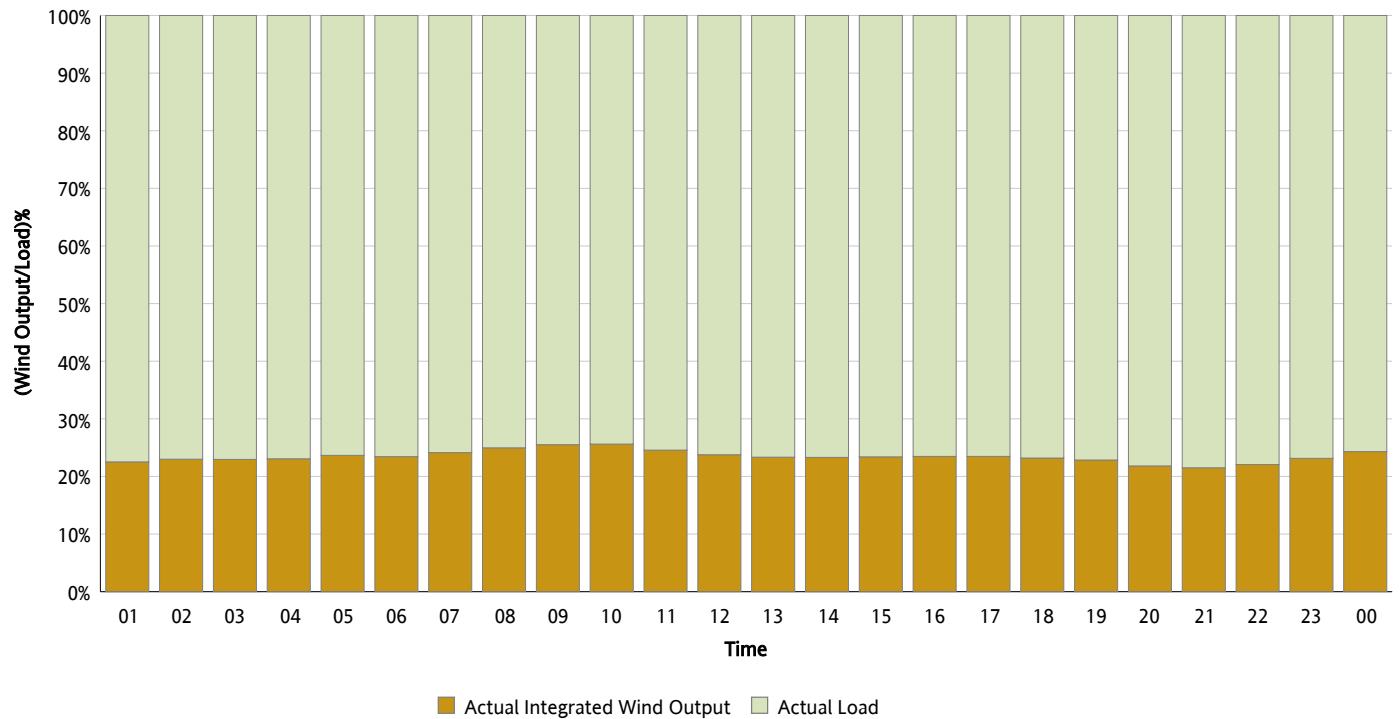
Actual Wind Output as a Percentage of the Total Installed Wind Capacity

03/18/2012



Actual Wind Output as a Percentage of the ERCOT Load

03/18/2012



ERCOT Load vs. Actual Wind Output

03/11/2012 - 03/18/2012

